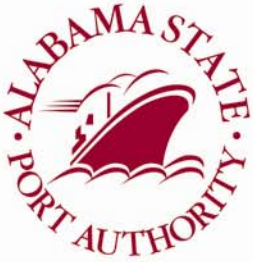


Alabama State Port Authority

Port Update

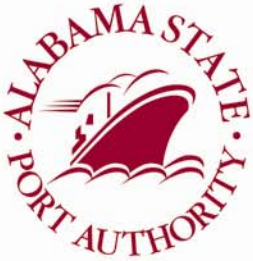
Coosa-Alabama River
Improvement Association
February 26, 2010
www.asdd.com



Port of Mobile

- 10th Largest U.S. Port in Total Trade*
- Excellent Transportation Infrastructure
 - I-10 & I-65
 - 5 Class 1 Railroads (AGR-BNSF, CN, CSX, KCS, NS)
 - Rail Ferry Service Every 4-days to Mexico
- Container, General Cargo & Heavy Lift Terminals
- 400 Ton Heavy Lift Crane in Port
- Established Trade Lanes
- Full Service Seaport
- Favorable Labor Environment

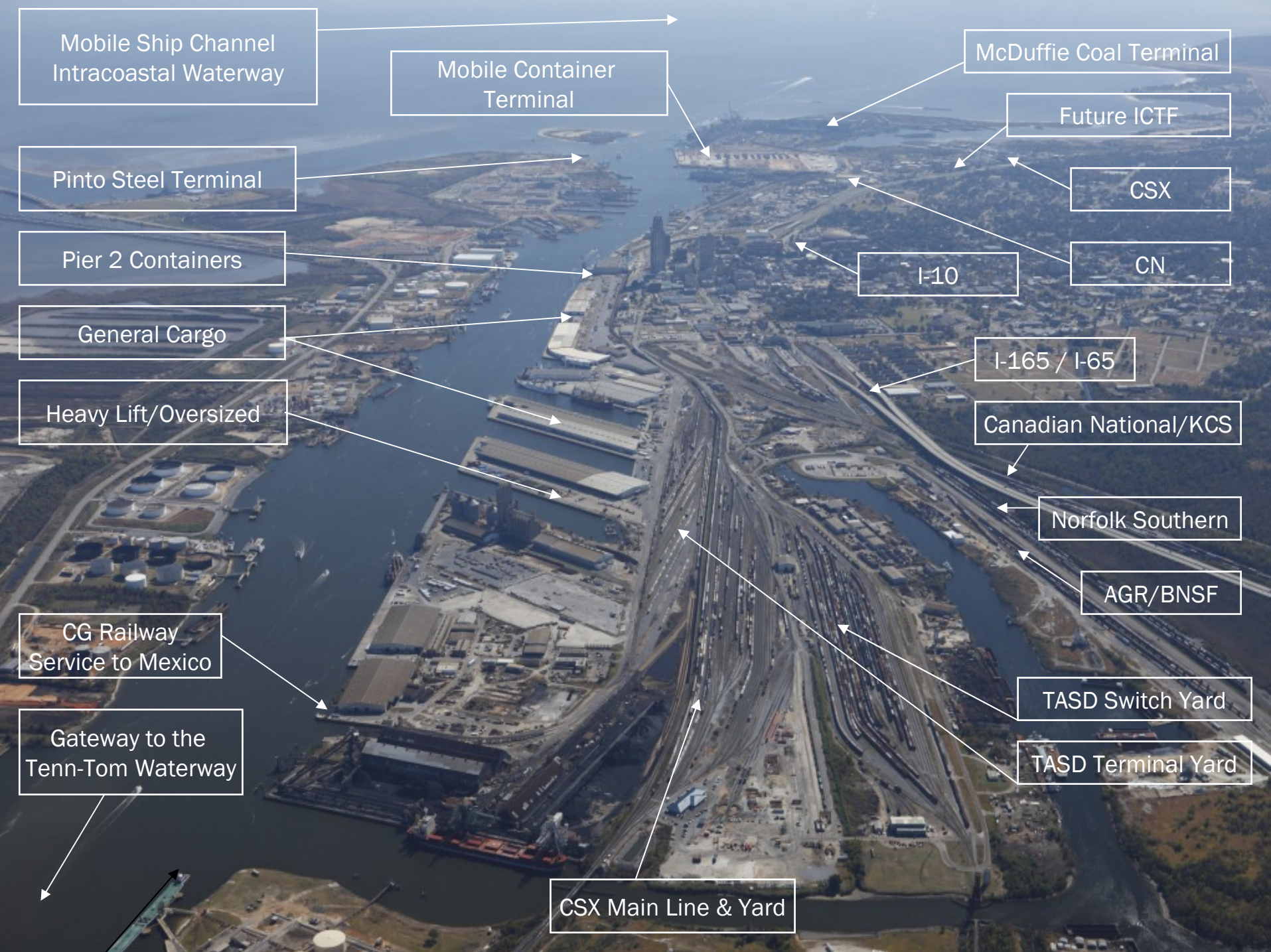
* USACE Waterborne Statistics Center 2007



The Port's Statewide Economic Impact*

- Alabama State Port Authority Generates:
 - 66,617 direct and indirect jobs
 - \$263+ million in direct and indirect tax impact
 - Total Economic Impact \$7,929,626,000

- Port of Mobile Private Terminals Generate:
 - 25,962 direct and indirect jobs
 - \$93.6 million in direct and indirect tax impact
 - Total Economic Impact \$2,405,692,000



Mobile Ship Channel
Intracoastal Waterway

Mobile Container
Terminal

McDuffie Coal Terminal

Pinto Steel Terminal

Future ICTF

Pier 2 Containers

CSX

General Cargo

I-10

CN

Heavy Lift/Oversized

I-165 / I-65

Canadian National/KCS

CG Railway
Service to Mexico

Norfolk Southern

AGR/BNSF

Gateway to the
Tenn-Tom Waterway

T ASD Switch Yard

T ASD Terminal Yard

CSX Main Line & Yard



Federal Project/ASPA Turning Basin



- Today, the Port Can Turn Ships up to 850 ft. LOA
- New Turning Basin will Serve Post-Panamax Ships
- Turning Basin Necessary to Serve Vessel Traffic Transiting a New Panama Canal
- \$34 Million Invested
- Construction Underway – Funded by USACE / ASPA



Heavy Lift Crane

- Heavy Lift Floating Crane
- Contracted by ASPA with Barnhart Crane & Rigging Co.
- Arrive by May 15, 2010
- 900T Crawler Secured to a 210'x68' Barge
- Capable of Lifting 400 Tons to the Center of Panamax Vessel





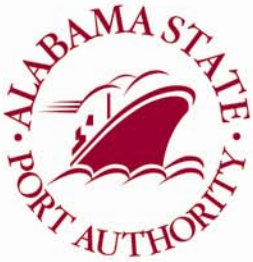
Mobile Container Terminal

Mobile Container Terminal

- \$300 Million Invested
- 2 Post-Panamax Cranes (4 Planned) - 2 Berths
- Mobile Container Terminal is a joint venture between APM Terminals North America and Terminal Link USA (CMA-CGM)
- Terminal Constructed in Two Phases
 - Phase 1 Operational with 95 Acres
 - Phase 2 Totals 40 acres



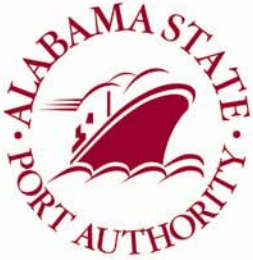
- Total Throughput Capacity:
 - Start-up 350,000 TEU
 - Full Build out 800,000 TEU
- 2,000 Feet of Berth
- 45 Foot Draft



MCT/McDuffie Access Bridge Completed

- \$16 Million Invested
- Provides Unencumbered Vehicle / Truck Access Over One of the Busiest Class I Railroads in the Country
- Eliminates Freight Slow-downs or Stoppage at Interstate 10 Virginia Street Exit





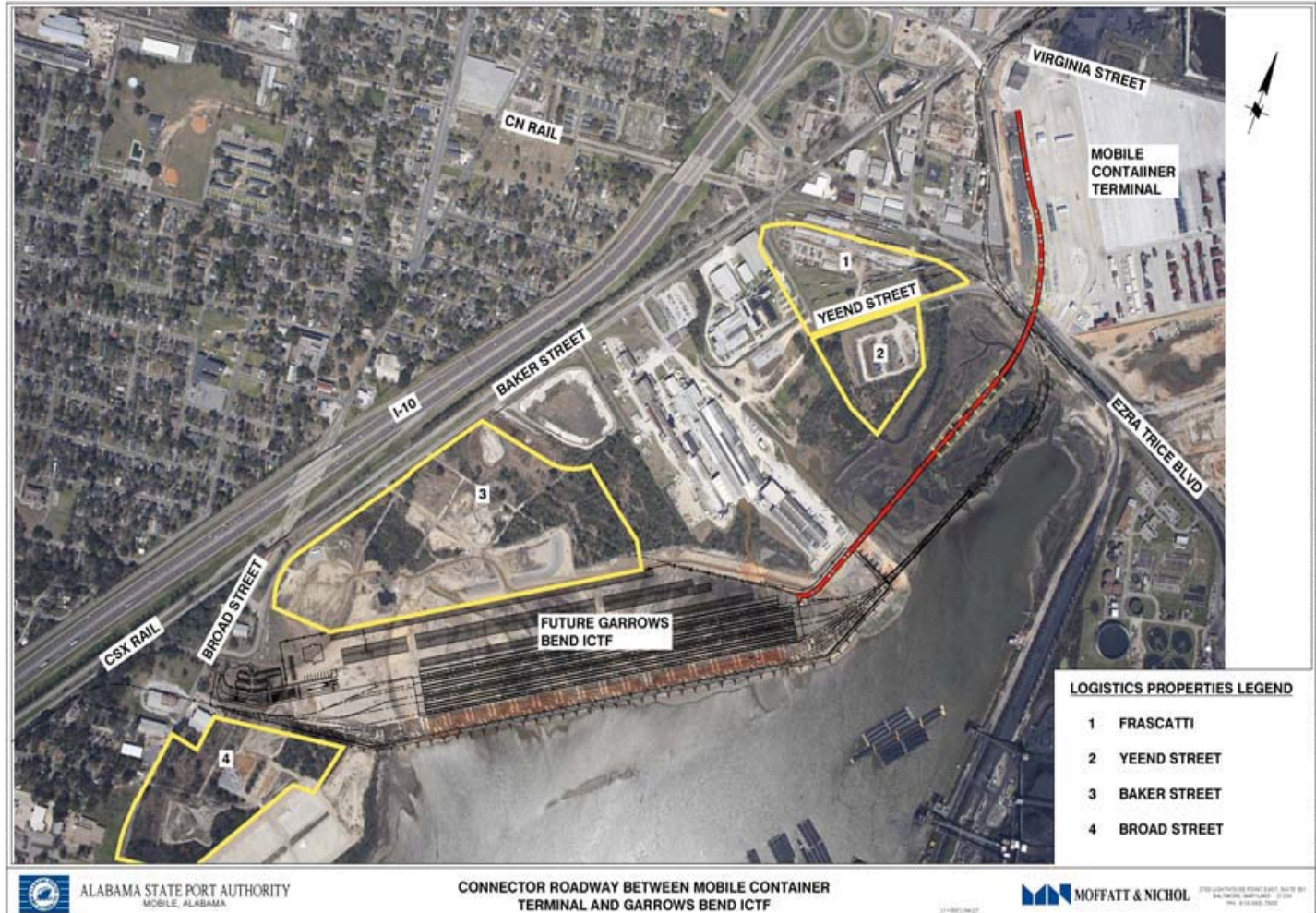
Future Rail Intermodal

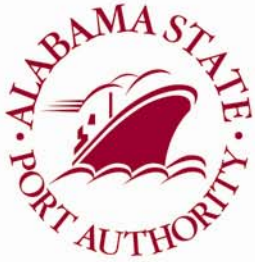
- Rail Intermodal Extends Port's Reach into New Markets
- Class I Railroads and TASD will have Direct Access Into Terminal
- 3-Year Development Plan – Funding is a Challenge
- 160,000 TEUs Throughput



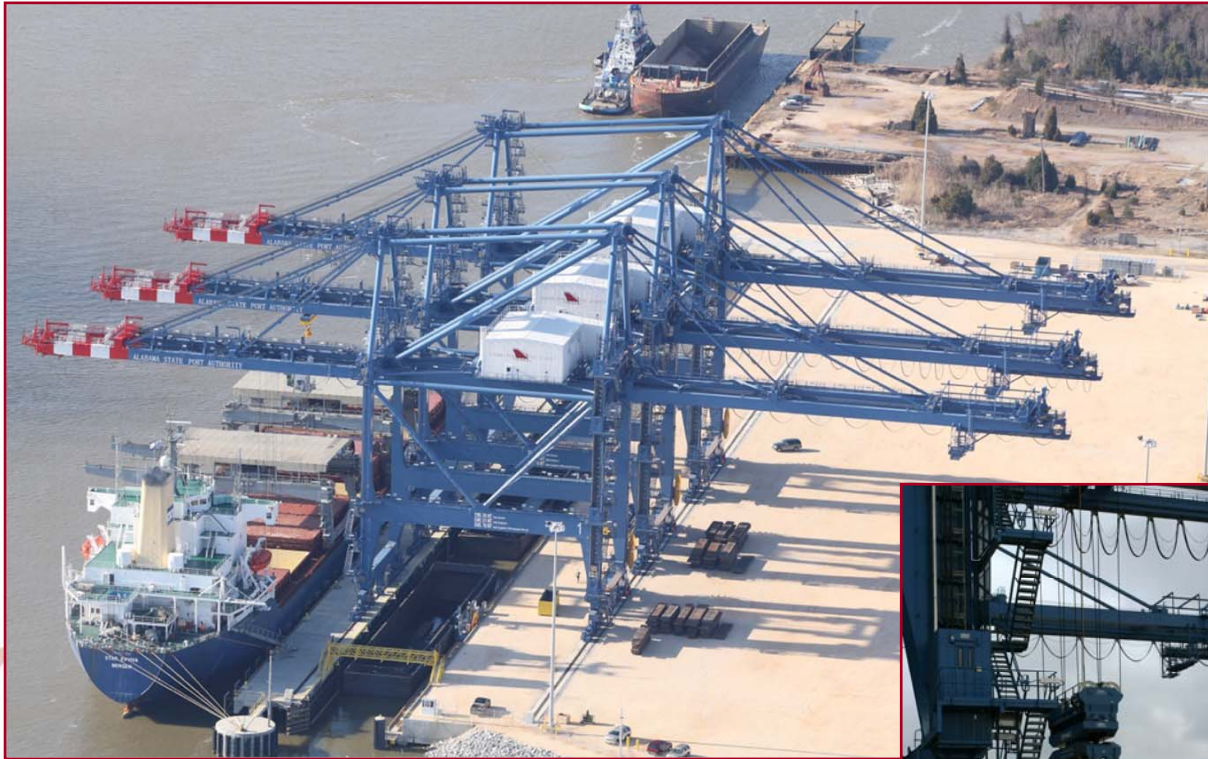


Component III - Logistics Park

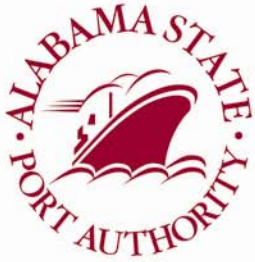




Pinto Terminal - Steel



- \$100 Million Invested
- Will Handle an Estimated 3 - 5 Million Tons of Steel Annually
- Current Customer will Move Steel Volumes via Waterway Only
- Three Wide-span Gantry Cranes/Fully Automated
- Terminal Completed
- First Steel Shipment Handled This Week



Alabama State Port Authority

Port Update

THANK YOU!
www.asdd.com